

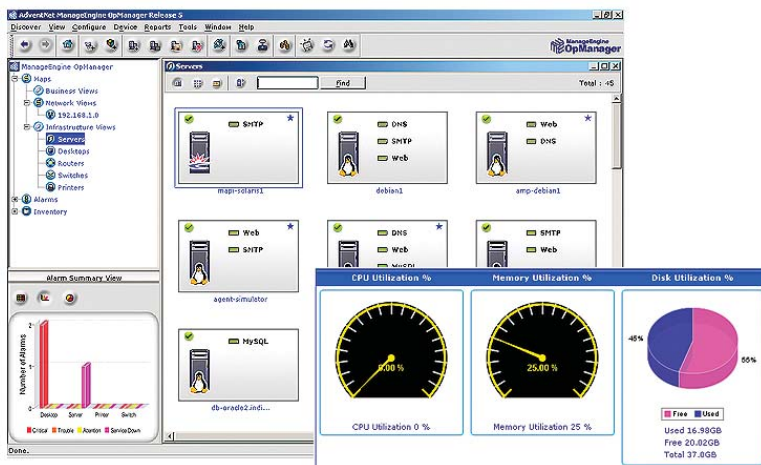


ManageEngine OpManager - The complete Enterprise Network Management System

ManageEngine OpManager is an integrated Network, System and Application monitoring software that offers advanced fault and performance management functionality. OpManager is easy-to-install, easy-to-use, and works right out-of-the-box.

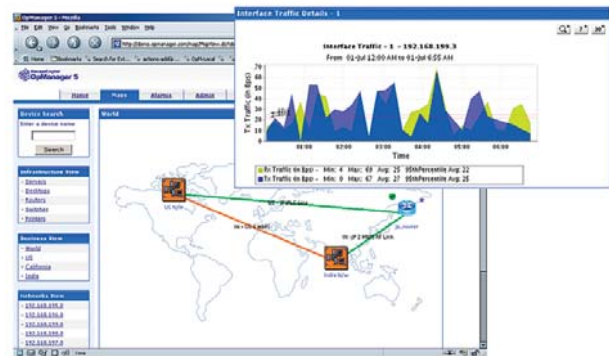
OpManager has all that you need to manage your IT infrastructure without being expensive or time consuming to implement. Learn why more and more Network administrators are choosing OpManager - a practical alternative to the large, complex and expensive network management frameworks.

- Easy to install and use - Roll into production in days, not months
- An Integrated Solution - Out of the box, OpManager includes WAN monitoring, Server management, and Application management functions
- Adaptive management - Manage devices from multiple vendors
- Affordable to Buy and Use – Low Total Cost of Ownership
- Runs on Windows, Linux and Solaris



WAN/Router Monitoring

- Provides real-time visibility into WAN performance
- Monitors WAN links for availability
- Alerts when WAN link performance degrades
- Reports and graphs for:
 - Interface availability statistics
 - Interface traffic and utilization statistics
 - Interface response time statistics
 - Interface errors and discards
- Monitors over 25 critical parameters on Cisco routers
- Reports on WAN traffic usage using NetFlow analyzer (Add-on Module)



Server Management

- Monitors CPU, Memory and Disk utilization
- Monitors services such as HTTP, SMTP, IMAP, FTP, DNS, LDAP, HTTPS etc.
- Alerts when WAN link performance degrades
- Identify service response time degradations
- View active processes and installed software details
- Identify servers running low on disk space
- Monitor over 40 critical parameters on Dell Power Edge and Compaq Proliant servers
- Proactively monitor your Windows Active Directory availability & performance.

Application Management

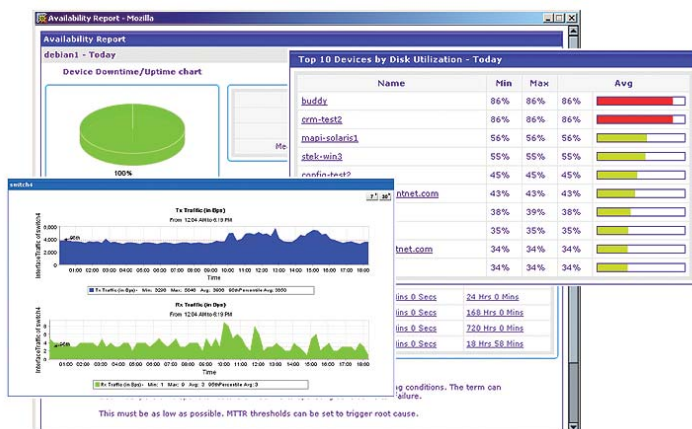
- Exchange 2000/2003: Monitor critical Exchange services, Information Store, Queues & Connections, etc.
- MS-Exchange 5.5: Monitor over 10 parameters such as Connection statistics, Message statistics, Non delivery reports etc.
- Lotus Notes: Monitor over 30 parameters such as MTA Transfer Failures, Mail Delivery Time, Waiting Mails, Mail server hops etc.
- MS-SQL: Monitor around 15 parameters Cache Hit Ratio, IO Batch Writes, IO Page Reads, Active Locks, Transaction Log space etc.
- Oracle: Monitor over 10 parameters such as Table space allocated, Data file Disk writes, Cache Invalidations, Table scan Blocks, Number of User commits etc.

Switch and Printer Monitoring

- Provides live view of discovered Printers and Switches
- Monitor Switch ports for availability
- Detect and prevent broadcast storms (worms) in the LAN
- Monitor printer availability and get alerted for Paper jam, No Paper, Low Paper, No Toner, Low Toner etc.

Fault Management

- Intelligent alarm correlation and color coded alarms
- Receive Email / SMS notifications
- Supports SNMP Traps
- Automatically execute self healing scripts/programs when a fault occurs
- Support for acknowledging alarms and adding operator notes
- Automatically escalate critical alarms that are unresolved
- Suppress known or recurring alarms



Performance Management

- Over 160 graphs and 40 reports out-of-the-box
- Monitor Interface traffic, utilization and error statistics
- Monitor CPU, Memory and Disk utilization statistics
- Monitor Availability and Response time statistics
- Get reports on Daily, Weekly, Monthly and custom period basis
- Proactively identify performance degradations using thresholds
- Export reports into HTML, PDF, CSV formats

Adaptive Management

- Add custom device types
- Monitor custom services over TCP
- Add support for vendor specific SNMP Traps
- Monitor and analyze specific characteristics of any SNMP manageable device
- Out-of-the-box support for Cisco routers, Dell Power Edge and Compaq Proliant servers

"I see OpManager as a valuable tool to provide complete network system and application monitoring at an affordable price. I found it very user friendly, easy to deploy, and overall a comprehensive network monitoring and management tool."

- John Jordan, Technical Analyst, ZEDA Limited

"OpManager is a product with high quality of fault and performance management capabilities, at an affordable price. This product proactively manages our network and it is very easy to use"

- Liu Guotao, Senior Manager-IT, Liuhe Tobacco Company of Jiang Su province

"Before deploying OpManager, we had a tough time managing critical devices in our network and now OpManager takes care of almost every thing, I would say our entire network, and this really helps our business to serve our customers better. Keep doing the great work!"

- Umberto Zaccarini, WMG Italia Network

"OpManager provides a superior solution as compared to other tools that I have used in the past ...It allows me to quickly navigate through event data, pinpoint specific problems, and use that information to take corrective actions."

- Venkat Penmetsa, Network and systems administrator, CustomerSat Inc.,

"We tried different network monitoring products and most of them are designed to run on Windows. We chose OpManager as it can run on Linux as well as Windows. We also liked the out-of-the-box reports and graphs for availability, utilization and response time."

-Moktar Kone, System Administrator, MTDS

System requirements : Pentium III 800 Mhz, 512 MB RAM, 200 MB Hard disk space. OS supported : Windows 2000/NT/XP, Red Hat Linux 7.2 and above, Sun Solaris 2.6 and above