

# ManageEngine OpStor

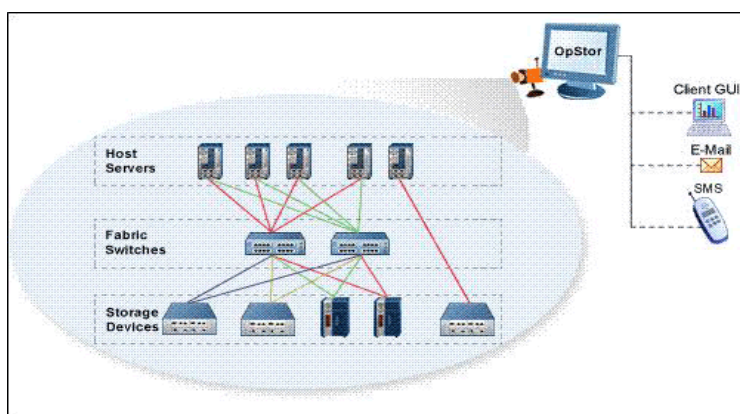
Simplified Storage Infrastructure Monitoring Tool

ManageEngine® OpStor is an enterprise-ready, easy-to-use, and affordable storage infrastructure monitoring solution that helps enterprises to monitor their mission-critical storage resources effectively. It enables you to monitor fiber channel switches, Storage Arrays, Tape Libraries, Host Servers and HBAs which form the backbone of enterprise applications.

ManageEngine® OpStor enables Storage Administrators to have a unified view of their heterogeneous storage environment through a user-friendly web interface. It helps administrators detect problems early before they affect the business applications. It also helps reduce the time to repair through an integrated management solution.

## Unified View

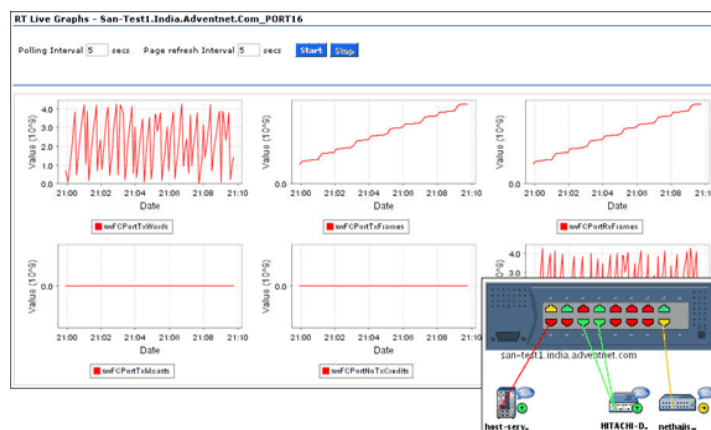
ManageEngine® OpStor gives an integrated view of multi-vendor resources that make up your storage environment. It constantly keeps track of resource availability and performance so that critical business applications that depend on storage infrastructure are not affected. Storage Administrators can view the critical status of storage resources and be notified of any alarms in real time.



## Key Benefits

- ▶ Increased visibility with unified view of your storage environment
- ▶ Reduced downtime with timely detection of problems
- ▶ Saved administrative time with effective reporting and escalations
- ▶ Lower Total Cost of Ownership with NO extra software purchases
- ▶ Simplified management at an affordable price

## Fabric Switch Monitoring



- ▶ Ensure Port availability
- ▶ Monitor Port performance and utilization
- ▶ Monitor zones, VSANs
- ▶ Troubleshoot with real-time graphing
- ▶ Secure telnet tunnelling

## Storage Array Monitoring

NetApp RAID - netapp\_1

Volume Name	Used Storage	Total Storage	Used Percentage
/vol/mirror1/	232.5GB	615.4GB	37 %
/vol/mirror1/.snapshot	10.9GB	68.5GB	15 %
/vol/mirror2/	357.2GB	605.0GB	59 %
/vol/mirror2/.snapshot	21.5GB	65.2GB	32 %
/vol/mirror3/	340.3GB	615.4GB	55 %
/vol/mirror3/.snapshot	17.9GB	68.5GB	26 %
/vol/mirror4/	275.9GB	615.4GB	44 %
/vol/mirror4/.snapshot	22.4GB	68.5GB	32 %
/vol/mirror5/	232.5GB	615.4GB	37 %
/vol/mirror5/.snapshot	10.9GB	68.5GB	15 %
/vol/vol0/	135.1MB	95.6GB	0 %
/vol/vol0/.snapshot	13.2MB	23.9GB	0 %
/vol/vol1/	357.2GB	605.0GB	59 %
/vol/vol1/.snapshot	21.5GB	65.2GB	32 %
/vol/vol2/	340.3GB	615.4GB	55 %
/vol/vol2/.snapshot	17.9GB	68.5GB	26 %

- ▶ Monitor Physical components - Controllers, ports, drives
- ▶ Monitor logical components - LUNs, Volumes, Storage Groups
- ▶ Monitor health, availability and utilization of resources
- ▶ Monitor sensor faults, battery, Power supply status

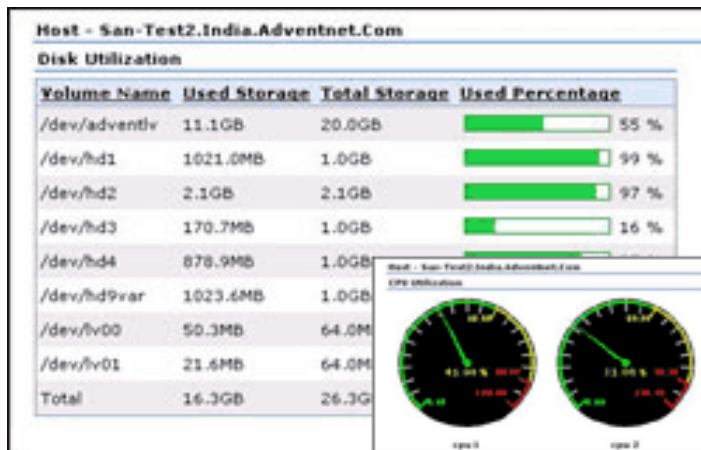
## Tape Library Monitoring

- ▶ Monitor Physical components - Tape drives, ports, cartridges
- ▶ Monitor logical components - Partitions, Movers
- ▶ Monitor health, availability and utilization of resources
- ▶ Monitor sensor faults, battery, Power supply status
- ▶ Launch device manager application from OpStor client

## HBA Monitoring

- ▶ Ensure HBA Port availability
- ▶ Monitor HBA Port performance and utilization
- ▶ Monitor traffic on HBAs

## Host Server Monitoring



- ▶ Identify SCSI / HBAs mounted on Host servers
- ▶ Monitor CPU & Memory utilization
- ▶ Monitor Disk space Utilization & IO statistics
- ▶ Monitor Windows, Linux, Solaris, HP-UX, IBM AIX servers

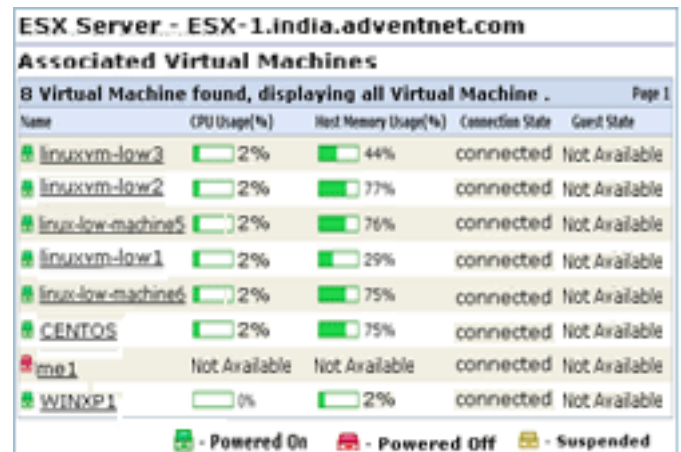
## Notify & Resolve Problems

- ▶ Intelligent alarm correlation and color coded alarms
- ▶ Automatic escalation of critical and unresolved alarms
- ▶ Get notified through e-mail, SMS
- ▶ Take corrective actions by executing custom scripts
- ▶ Acknowledge and add operator notes

## System Requirements

Hardware : Pentium III 1Ghz, 2GB RAM, 10 GB disk space  
Operating System : Windows, Linux  
Web Browser : Internet Explorer, FireFox and Opera

## VMware ESX / ESXi Monitoring



- ▶ Monitor VMWare ESX server health, with its virtual machines.
- ▶ Monitor VMware HBAs and NIC information.
- ▶ Monitor the CPU and Memory Utilization of both ESX servers and the virtual machines
- ▶ Monitor the DataStore utilization

## Reports and Graphs

- ▶ Reports on storage resource availability & utilization
- ▶ Reports on Key performance indicators (KPI)
- ▶ Top-N reports on Availability & Performance
- ▶ Reports on critical alarms and history
- ▶ Real-time graphs at port level to troubleshoot problems



## ZOHO Corp.

4900 Hopyard Rd., Suite 310  
Pleasanton, CA 94588. USA  
Phone: 1-925-924-9500 Fax: 1-925-924-9600

<http://www.zohocorp.com>

For queries on products : [sales@manageengine.com](mailto:sales@manageengine.com)

For support: [opstor-support@manageengine.com](mailto:opstor-support@manageengine.com)

## About ZOHO Corp.

ManageEngine is the Enterprise IT Management Software division of ZOHO Corp. (formerly AdventNet, Inc.). Founded in 1996, ZOHO Corp. is headquartered in Pleasanton, CA with offices in North America, Europe and Asia. ZOHO Corp. is privately held.

ZOHO Corp. has served a diverse range of enterprise IT, networking and telecom customers. ZOHO Corp. has achieved impressive growth over the years and has been a rock-solid supplier and partner, with sound financials. Visit us at <http://www.zohocorp.com>.